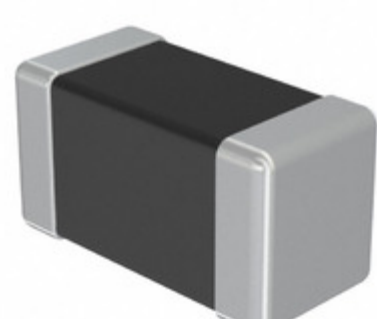


EMK042CG220JC-FW



Images are for reference only.
See Product Specifications for product details.
Buy EMK042CG220JC-FW with confidence from
Component-World.HK, 1 Year Warranty

TAIYO YUDEN

Part Number: [EMK042CG220JC-FW](#)
Manufacturer: [Taiyo Yuden](#)
Description: CAP CER 22PF 16V NP0 01005
Data sheet: [MLCC Capacitor Catalog](#)
[MLCC Capacitor Catalog](#)
[MLCC Capacitors Catalog](#)

RoHS Status: Lead free / RoHS Compliant
Ship From: Hong Kong
Shipment Way: DHL/Fedex/TNT/UPS/EMS

[Request For Quotation](#)

PRODUCT PARAMETER

Part Number	EMK042CG220JC-FW	Manufacturer	Taiyo Yuden
Description	CAP CER 22PF 16V NP0 01005	Lead Free Status / RoHS Status	Lead free / RoHS Compliant
Quantity Available	1320413 pcs	Data sheet	MLCC Capacitor Catalog MLCC Capacitor Catalog MLCC Capacitors Catalog
Category	Capacitors	Voltage - Rated	16V
Tolerance	±5%	Thickness (Max)	0.009" (0.22mm)
Temperature Coefficient	C0G, NP0	Size / Dimension	0.016" L x 0.008" W (0.40mm x 0.20mm)
Series	M	Ratings	-
Packaging	Tape & Reel (TR)	Package / Case	01005 (0402 Metric)
Other Names	587-2279-2 EMK042CG220JCFW RM EMK042 CG220JC-FW	Operating Temperature	-55°C ~ 125°C
Mounting Type	Surface Mount, MLCC	Moisture Sensitivity Level (MSL)	1 (Unlimited)
Lead Style	-	Lead Spacing	-
Lead Free Status / RoHS Status	Lead free / RoHS Compliant	Height - Seated (Max)	-
Features	-	Detailed Description	22pF ±5% 16V Ceramic Capacitor C0G, NP0 01005 (0402 Metric)
Capacitance	22pF	Applications	General Purpose

Component-World.com is a Reliable Stocking Distributor of Electronic Components. We specialize in all Taiyo Yuden series electronic components. We have 1320413 pieces of Taiyo Yuden EMK042CG220JC-FW in stock available now. Request a quote from electronics components distributor at Component-World.com, our sales team will contact you within 24 hours.
RFQ Email: info@Components-World.com

RELATED PRODUCTS

	Part#: EMK042CG220JC-F Description: CAP CER 22PF 16V NP0 01005	Manufacturers: Taiyo Yuden	RFQ
	Part#: EMK042CG1R5CC-FW Description: CAP CER 1.5PF 16V NP0 01005	Manufacturers: Taiyo Yuden	RFQ
	Part#: EMK042CG221JC-W Description: MLCC ,01005,16V ,C0G,220PF5%	Manufacturers: Taiyo Yuden	RFQ
	Part#: EMK042CG200JC-W Description: CAP CER 20PF 16V C0G 01005	Manufacturers: Taiyo Yuden	RFQ
	Part#: EMK042CG2R2CC-FW Description: CAP CER 2.2PF 16V NP0 01005	Manufacturers: Taiyo Yuden	RFQ
	Part#: EMK042CG2R2CC-F Description: CAP CER 2.2PF 16V NP0 01005	Manufacturers: Taiyo Yuden	RFQ
	Part#: EMK042CG220JC-W Description: CAP CER 22PF 16V C0G 01005	Manufacturers: Taiyo Yuden	RFQ
	Part#: EMK042CG1R8CC-F Description: CAP CER 1.8PF 16V NP0 01005	Manufacturers: Taiyo Yuden	RFQ
	Part#: EMK042CG1R8CC-FW Description: CAP CER 1.8PF 16V NP0 01005	Manufacturers: Taiyo Yuden	RFQ
	Part#: EMK042CG241JC-W Description: MLCC ,01005,16V ,C0G,240PF5%	Manufacturers: Taiyo Yuden	RFQ
	Part#: EMK042CG271JC-W Description: MLCC ,01005,16V ,C0G,270PF5%	Manufacturers: Taiyo Yuden	RFQ
	Part#: EMK042CG270JC-FW Description: CAP CER 27PF 16V NP0 01005	Manufacturers: Taiyo Yuden	RFQ
	Part#: EMK042CG1R2CD-W Description: CAP CER 1.2PF 16V NP0 01005	Manufacturers: Taiyo Yuden	RFQ
	Part#: EMK042CG1R5CD-W Description: CAP CER 1.5PF 16V NP0 01005	Manufacturers: Taiyo Yuden	RFQ
	Part#: EMK042CG240JC-W Description: CAP CER 24PF 16V C0G 01005	Manufacturers: Taiyo Yuden	RFQ
	Part#: EMK042CG1R5CC-F Description: CAP CER 1.5PF 16V NP0 01005	Manufacturers: Taiyo Yuden	RFQ
	Part#: EMK042CG270JC-F Description: CAP CER 27PF 16V NP0 01005	Manufacturers: Taiyo Yuden	RFQ
	Part#: EMK042CG1R2CC-FW Description: CAP CER 1.2PF 16V NP0 01005	Manufacturers: Taiyo Yuden	RFQ
	Part#: EMK042CG1R8CD-W Description: CAP CER 1.8PF 16V NP0 01005	Manufacturers: Taiyo Yuden	RFQ
	Part#: EMK042CG270JC-W Description: CAP CER 27PF 16V C0G 01005	Manufacturers: Taiyo Yuden	RFQ

Related keywords for EMK042CG220JC-FW

Taiyo Yuden EMK042CG220JC-FW	EMK042CG220JC-FW distributor	EMK042CG220JC-FW supplier	EMK042CG220JC-FW price
EMK042CG220JC-FW download datasheet	EMK042CG220JC-FW datasheet	EMK042CG220JC-FW stock	buy EMK042CG220JC-FW
Taiyo Yuden EMK042CG220JC-FW			